

Cowbridge Comprehensive Public Art Scheme | Brief to Artists | June 2009

Exterior render panel overlays and interior feature wall

Vale of Glamorgan | Safle



1. Background

The Council is proceeding with a £16.5m first phase of work at the upper school site at Cowbridge Comprehensive School on Aberthin Road, with an estimated completion date of September 2010. It has also submitted a bid to the Welsh Assembly Government for further funding of £5m to allow a 'single phase' completion of the state of the art development. When complete, the new school will be a mix of new build and refurbished buildings and mean the end of 'split working' over three sites at Aberthin Road and Town Mill Road.

Four existing buildings, including the gymnasium and technology block, will be demolished, while a further four, including the kitchen and canteen area, art block and classrooms, will be refurbished.

New build of 6,700 square metres will include:

- an indoor four court sports hall and changing rooms;
- gym facilities which can also be used for keep fit, dance, etc;
- a main hall for assemblies, school productions, presentation evenings;
- music and rehearsal rooms;
- a drama studio;
- assisted learning, design and food technology facilities;
- science, humanities and English classrooms;
- staff room and management suite, and
- space for tutorials and individual learning.

A critical aspect of the development will be the provision of a safe area for the drop off and pick up of pupils and, following the purchase of land adjacent to the site, there are plans for an all-weather pitch, multi-use games area and traditional grass areas for football, rugby, cricket and athletics which form part of the second phase of the development.

2. The Commission

Vale of Glamorgan and Safle would like to commission an artist/s to develop detailed design proposals for exterior render panel overlays and internal feature wall. The budget for both of these different types of panel is £9,000 plus VAT. The Budget breakdown is described in section 4.1.

We want to commission an artist who will research and prepare, and run workshops that will take place in the school with a selected year group for each commission (2.1 and 2.2). The artist will spend time designing the artwork incorporating the ideas derived from these workshops in to the final design.

On completion, the artist will be asked to present their designs to an arts steering group, which is charged with recommending approval to the Client. Small amendments to the design may be requested by the steering group and the artist agrees to undertake these at no extra design time cost, within reason. To facilitate this process, the steering group will meet to review the artists indicative proposals prior to the final presentation meeting and discuss these with the artist.

The artists will be selected in July, expected to research and prepare during August and then run workshops in September and October; the dates to be finalised with the selected artist and the school.

The design proposal will be presented by the artist in November and, subject to approval, will be commissioned to fabricate the artwork, to be installed by June 2010.

2.1 The Exterior Render Panel Overlays

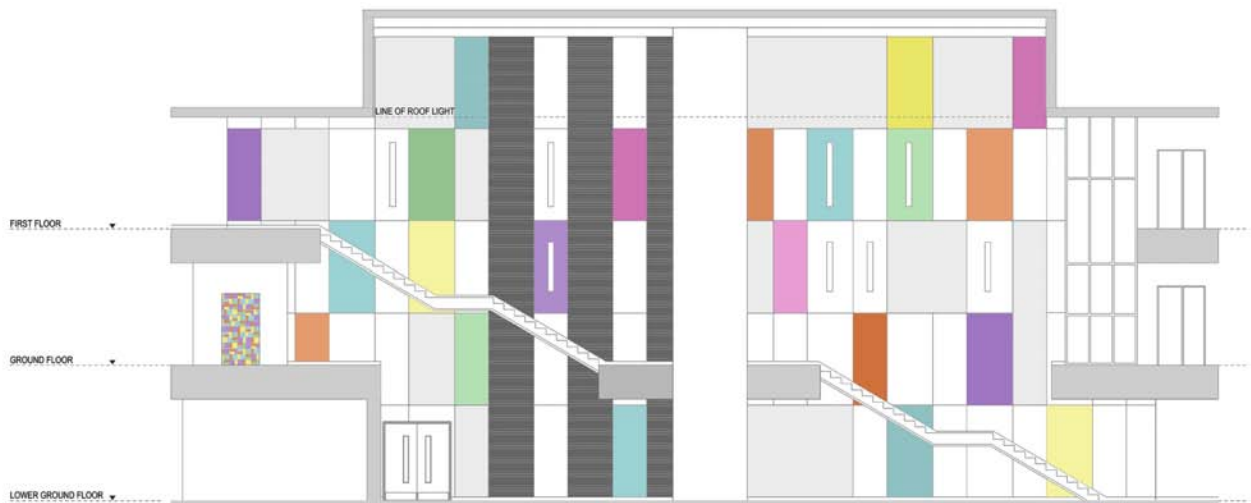
The exterior render panel overlays are situated between the windows of the new build element of the school. We are looking for an artist to create designs that can be stencilled, painted or other way of creating a robust, enduring and striking artwork. We wish to limit the palette of colour and number of render panels available to paint and these constraints will be discussed with the selected artist.

The front page of this brief has an artists drawing that is a good illustration of the planned locations and current colour scheme of the panels and there is a cluster of five panels in each section. The artist does not have to utilise every panel and there are other areas around the school that could be used. The selected artist will hire a temporary mobile access scaffold to paint directly on to the selected panels.

2.2 The Internal feature wall

The artist will work with a selected year group from the school to produce designs that can be saved digitally in a jpeg or pdf format. The jpegs are sent to the Acoustic panel fabricator to allow them to print the design on to the fabric of the panel.

The drawings below are the latest version of the internal panels feature and need approval from the Client and is for illustration only. Not every panel will need to have an artwork. The striped grey panels follow the design from the entrance paving, along the floor of the foyer and up the wall to the ceiling. The colour scheme is derived from the colours throughout the entire school.



2.3 Maintenance

The commissioned artist will develop detailed proposals for artworks as part of the Cowbridge Comprehensive School development programme. Consideration within the proposals must be given to ongoing maintenance of the works as follows:

- The artworks should not have any costly ongoing maintenance requirements.
- The artworks should be accessible for maintenance / replacement of component parts.
- A comprehensive maintenance schedule must be approved by Vale of Glamorgan Council.

2.4 Constraints

The commissioned artist will be asked to consider the following constraints during the design development of the works.

- Cowbridge Comprehensive School cleansing and pedestrian safety policy.
- Other underground services may need to be taken into consideration.
- Views and vistas of key landmark buildings are to be retained.
- Works need to be durable and have low maintenance requirements.
- Works are required to consider issues in relation to vandalism in the public realm.
- Particular attention will be paid to health and safety.
- The artworks must not conflict with existing safety measures such as CCTV and lighting.
- Access for pedestrians will be maintained.
- Compliance with the implications of DDA regulations.
- Compliance with planning and building regulations.

2.5 Professional Practice

In the event of manufacture by the artist she/he must demonstrate current and appropriate indemnity insurance relevant to the artist in person and to the object/s to be manufactured. Where it is anticipated that on-site manufacture or installation will be carried out by the artist in conjunction with the project team, adequate and appropriate public liability and professional indemnity insurance must be in place. In the event of commissioning, details of Professional and Product Indemnity will be required sufficient to provide the Client with assurance on matters of liability and so that neither the client or contractor are exposed to undue risk on any element commissioned from the artist. The observation of CDM regulations is required where appropriate.

In addition to constraints already stated, detailed consideration must be given to:

- Issues of Health and Safety both in the design proposal and realization.
- Methodology.
- Material and structural integrity.
- Methodology for manufacture.

3. Artist Selection

An arts steering group panel has been formed that will consist of representatives from Vale of Glamorgan Councillors and officers, members of the school including teachers and pupils, HLM Architects and Safle. The arts steering group will invite shortlisted artists to interview for the commission. The arts steering group will select one or more artists to run workshops with pupils from the school and use the generated ideas to inform their designs. The artist/s will present their designs to the arts steering group who will then decide whether or not to commission the artwork. The artist/s may be asked to alter or modify the design, in which case no extra payment is available if this scenario were to occur.

The interviews will be held at a location to be confirmed. The interview will last 45 minutes during which the artist will have approximately 20 minutes to present their work with the remaining 25 minutes for questions from and to the panel. Applicants will be assessed on the basis of their track record, approach and initial response to the brief. We do not require designs at this stage.

3.1 Commissioning Agency

Following a competitive tendering process by the Vale of Glamorgan, Safle was awarded the contract to provide management services in the development of the Cowbridge Public Art Scheme. Based in Cardiff, and working across the UK, Safle integrates exceptional art interventions within urban and rural landscapes, communities, regeneration initiatives and architectural developments. Safle will maintain links between the commissioned artist/s, the Client and other identified stakeholders throughout the design and implementation of the project.

4. Budget and Appointment

This commission will follow a 2-stage appointment process with the artists initially contracted to undertake Stage 1 as below. The commencement of Stage 2 will be dependent on the arts steering group giving approval of the final design proposals and the securing of any permissions required.

4.1 Stage 1 – Artist Design

An artist /s will be commissioned to develop detailed designs for the Exterior Render panels and Internal feature wall for approval by The Client and submitted to the Local Authority for Planning Approval.

The artist Stage 1 fee for the design of the works is as follows:

Artist design fee	£2000
Workshop Fees	£1500
Workshop material	£500

Timescale	
Artist Selection	Early July 2009
Artist research time	August 2009
Workshop period	July or September / October 2009
Artist Design	November 2009
Presentation of completed design	November / December 2009
Local Authority Planning Approvals	January 2010
Artwork fabrication commences	January / February 2010

4.2 Stage 2 – Artwork Implementation

The budget for the artist to fabricate and install both the Exterior and Internal feature wall is £5000 plus VAT.

Timescale for stage 2

Timescales for the commencement of Stage 2 are to be confirmed however the artist will be contracted to deliver and install the works by June 2010.

5. Application Procedure

To apply please send a powerpoint presentation of up to **eight** pages showing examples of past work appropriate to this commission, a descriptive list to accompany images, a current CV and letter of application. Applications should be sent to:

Exterior Render Panel overlays and Interior feature wall
Cowbridge Comprehensive School Public Art Scheme
Safle
Unit 4
Sovereign Quay
Havannah Street
Cardiff
CF10 5SF

DEADLINE for applications is 5pm, 6th July 2009.

5.1 Technical information

If you use Windows Vista please save your powerpoint presentation as a 97-2003 compatible version.

5.2 Applicant Enquiries

All questions and queries regarding applications should be sent to David Symons at the address above or to david.symons@safle.com or phone 0845 241 3684.

Prepared for Vale of Glamorgan Council by

