

A £6,000 participatory Public Art Commission is being offered for a school project resulting in the design, production and installation of an artwork/s at Davigdor Infants School, Brighton & Hove.

1. Introduction and Background

Davigdor is a very popular and highly oversubscribed school in central Hove. They are currently becoming a 4-form entry infant school and at present have 330 children on roll aged between 4-7 years of age. The school is currently undergoing an expansion to accommodate the increased intake and the building works are expected to be complete by September 2010.

In July 2008, OFSTED judged Davigdor as an 'outstanding school' and one where 'the curriculum is made interesting and exciting for all pupils'. The schools belief in a rich, meaningful and broad curriculum that encourages creativity, is central to their work.

Davigdor benefit from a vibrant and highly culturally and linguistically diverse school community. Many parents generously share their considerable artistic, creative and other professional expertise and skills to enrich and extend curriculum experiences. Many of the staff also possess considerable artistic flair and expertise. As a result, the standards children achieve in art, design and other creative subjects are very high.

Davigdor was also the first school in Brighton & Hove to achieve the nationally accredited 'Inclusion Quality Mark' – they are totally committed to inclusive education and have achieved both local and national recognition in this area.

For further information about Davigdor, please visit www.davigdor.school-portal.co.uk

2. The commission

The commission calls for a visual arts based participatory project resulting in artworks to be installed within the school. Community, access and participation are at the heart of the school's work and any project must promote these values. Artwork should take as a starting point the idea of community cohesion, and how the community can have an impact on the school environment and vice versa. We are open to any art form and are excited by the possibilities.

The school is currently undergoing an expansion to the existing building. This will create a new main entrance and lobby area and will become a new 2-storey building in place of the current single storey area. The site for the commission will be in the newly extended part of the building. The commissioned artworks will be situated on the main ground floor corridor leading to a stairwell to the first floor, there is potential for 2D wall based work and/or a hanging/mobile artwork/s. This staircase is primarily accessed by children in Year 2.

The desired impact of the work is that it should use the clean lined, contemporary space as a backdrop to create a visually stunning piece of work which is in keeping with the modern feel but will also be relevant in years to come. The work must be accessible for children and adults alike.

We are looking for an individual/organisation who will be able to deliver this project in close collaboration with staff and pupils. This project must extend and compliment the schools existing arts provision and offer skills development for staff.

3. Participatory Element

We would like to work with the whole school, which includes Reception, Year 1 and Year 2 children (4-7 years) and could engage with up to 330 children.

The commission must have a participatory element, which involves pupils in the process and/or production and would want to commission an individual/organisation who can demonstrate a good track record of working within primary school settings in a creative environment. How the participatory element would work must be outlined in the submission. The staff at the school are also very keen to get involved and this is seen as a chance for professional development.

4. Technical information and restrictions

The choice of media is open. Any hanging artwork over the stair landing should not exceed 1.3 metres in depth. The dimension from the landing to the roof is approximately 3.35 metres and there must be a 2 metres head clearance. The balustrade is solid and continuous with the handrails face fixed. The walls are block work with a 3mm skim coat of plaster that is quite robust for fitting into. The main restriction is that artworks cannot project into the staircase from the wall more than 50 mm. Other restrictions for exhibiting/installing the final artworks will be in discussion with the selected artists.

Please see enclosed images. Further drawings are available from saj.fareed@brighton-hove.gov.uk.

The commissioned artist must have a current CRB check and public liability insurance of £5,000,000.

5. Budget

The budget must cover the participatory element, design, production and installation of the artwork plus artist's fees and materials. These costs would need to be included in the £6,000 and must be reflected in the submission. The budget will also cover any transport expenses.

6. Process and Timescale

The project will commence in May 2010 and take place over the summer term ending July 2010. There will be flexibility regarding the timescale of the installation of the final artwork/s as this will be dependent on the actual completion of the expansion work. We envisage the installation to take place during August/September 2010 but this will be negotiated with the commissioned artist. There will also be a celebration launch event of the project after the installation period of the final artwork/s. The budget for the launch is separate to the £6,000 budget for this commission.

A site visit is offered at Davigdor on **Monday 29th March, 4pm**. If you would like to attend the site visit please contact Saj Fareed on 07779786883 or email saj.fareed@brighton-hove.gov.uk. Please contact Saj by 5pm Friday 26th March.

To apply for the commission we require a short proposal indicating:

- A brief outline of the idea
- An outline of the participatory element
- Information as to materials
- An outline of costings (artist fees and materials)
- Evidence of previous work
- A full CV

If you send images of previous work on CD please only include details of commissions of a similar scale and budget. CDs must also be PC compatible. We can accept submissions via email but please be advised that images will be printed in low resolution and black and white.

Please enclose a stamped addressed envelope for any materials, slides or pictures that you wish to be returned to you.

The deadline for the submission is Tuesday 20th April, 5pm. (All applicants will be notified of the outcome of their submission).

Please send submissions to:

Saj Fareed
Project Manager
Arts and Cultural Projects
Brighton and Hove City Council
Rm 429 Kings House
Grand Avenue
Hove BN3 2SL

Interviews will be on held on 26th April 2010 at Davigdor School.

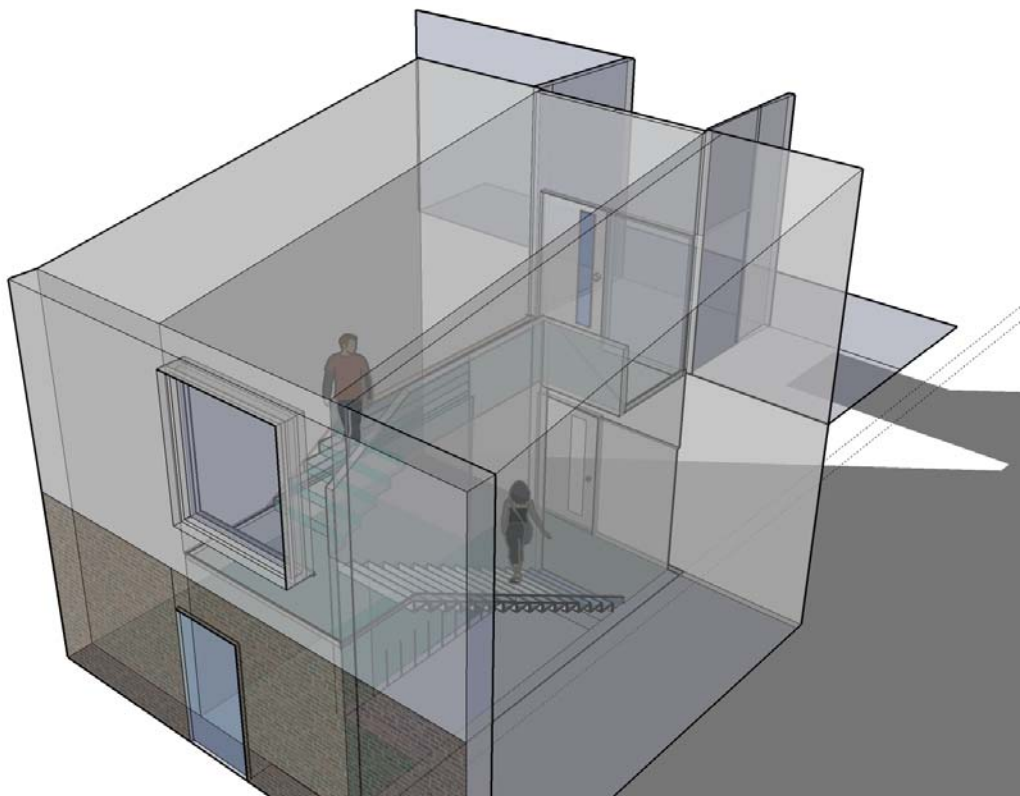
The selection panel for this commission will be made up of:

Representatives from Brighton and Hove City Council
Representatives from the Davigdor Infant School
A Ward Councilor
School Governor
School Council Members
Architects

7. Enquiries

If you have any questions please contact Saj Fareed, Project Manager on 07779786883 or email saj.fareed@brighton-hove.gov.uk

A) View from outside the stairwell area



B) View with side wall removed of the stairwell area

