

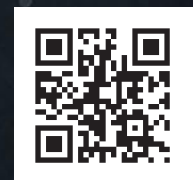
HOUSE 2012

Brighton & Hove
5 - 27 May

www.housefestival.org



HOUSE
2012
housefestival.org



Foreword

It's with huge pleasure that HOUSE welcomes renowned British artist David Batchelor to Brighton this May, as Lead Artist of HOUSE 2012. Delivering striking new commissions including Skip and the Brighton Festival co-commission *Brighton Palermo Remix*, as well as an intriguing exhibition of Batchelor's related work, HOUSE 2012 contrasts the domestic location of The Regency Town House with the city centre site of Bartholomew Square.

Along-side Batchelor's work, five innovative new satellite commissions from regional artists bring a vibrancy to the streets and public spaces of the city. Responding to the theme of domesticity, the commonplace, and the everyday, HOUSE 2012 reaches out within and beyond the gallery walls.

Central to HOUSE 2012 is an exploration of new ways for people to experience the visual arts and Curator Celia Davies, with Assistant Curator Clare Sheppard, brings a dynamic curatorial vision and focus to the city this May.

HOUSE 2012 is enabled by the generous support of Arts Council England.

Judy Stevens

HOUSE Festival Director

Acknowledgements

HOUSE festival would like to thank its supporters and partners: Andrew Comben at Brighton Festival; Bill Randall, Paula Murray and Donna Close at Brighton and Hove City Council; John Carmichael at Visit Brighton; Karin Mori and Belinda Greenhalgh at Phoenix Brighton; Mike Wilkins at Allied Irish Bank; Stuart Dorn at Brighton Race Course; Photoworks; Ben Rubinstein at Cogapp; Jim Clewlow at PDT Solicitors; Roger Browning at Victor Boorman; Ann Boddington, Karen Norquay and Chris Stevens at Brighton University; Dennis Simpson, Elaine Wolf, Arjo Ghosh, Dino Skinner, Nicola Coleby and Stewart Grey.

Thanks also to Nick Tyson at The Regency Town House; Karl at Moshi Moshi; Angi Mariani, Paul Clark and Fiona McTernan at *The Latest*; Lorretta Sacco and The Old Market team.

We would like to thank the HOUSE 2012 artists:

David Batchelor, Tim Brown & Anna Deamer, Helene Kazan, Caroline Le Breton, Robin Blackledge and Deb Bowness.

Also the HOUSE team: Guest curator Celia Davies, Assistant Curator Clare Sheppard, Lauren Davies, Natasha Ba-Abdullah, Helen Cann, Tim Holmes, Matt Easton, and all the HOUSE 2012 volunteers.

HOUSE festival has been developed and coordinated by directors, Judy Stevens and Chris Lord.

Cover image:

David Batchelor: *Brighton Palermo Remix* (detail)

Introduction

HOUSE is Brighton & Hove's curated and programmed visual arts festival. Returning for its fourth year, HOUSE 2012 is delighted to be working with prominent contemporary artist David Batchelor. As lead artist, HOUSE 2012 has created two major commissions with Batchelor specifically for Brighton & Hove as well as a bespoke exhibition. One of these commissions, *Brighton Palermo Remix* has been developed in partnership with Brighton Festival.

As lead artist Batchelor has also influenced the selection and development of five satellite commissions that make up HOUSE Festival 2012. Through the process of an open-call for proposals, the HOUSE 2012 panel chose Robin Blackledge, Deb Bowness, CINECITY & Anna Deamer, Helene Kazan and Caroline Le Breton.

Inherent to the character of HOUSE 2012 is work that exists both within and beyond the gallery walls, out on to the street. Collectively, all these projects make playful interventions across the city of Brighton & Hove over the month of May, exploring themes of domesticity, the urban and the everyday.

With significant funding from Arts Council England, HOUSE 2012 promises to be the most ambitious incarnation of the festival across the city yet. This guide provides further information about the talented mix of artists who make up HOUSE 2012 and where you can find their work.

Celia Davies

Guest Curator

HOUSE 2012

supported by



Supported using public funding by
**ARTS COUNCIL
ENGLAND**



partners

**BRIGHTON
FESTIVAL 2012**

PHOENIX brighton
gallery artists studios education

photoworks
www.photoworks.org.uk

★
University of Brighton

The Regency Town House

sponsors

visitBrighton
www.visitbrighton.com



Victor Boorman & Co.

**BRIGHTON
RACING & EVENTS**



5 – 27 May

Mon – Sun 00.00-24.00

Moshi Moshi
Bartholomew Square
Brighton BN1 1JS

FREE

1

Skip

For many years David Batchelor has looked to the street for ideas and inspiration. For him the street is a repository of brilliant colours and often highly inventive forms. These colours and forms are visible for everyone to see but at the same time they have often been overlooked. In the past he has used salvaged light boxes (Spectrum of Brick Lane), plastic objects from Pound Shops (Parapillars) and street markets in Brazil (Disco Mecanique), neon signage (Festival Remix) and, most recently, fairground/seaside illuminations (Big Rock Candy Fountain). In each case the aim is to adapt these materials, forms and colours and draw attention to their presence in our visual culture.

A newly commissioned work *Skip* is sited outside Moshi Moshi in Bartholomew Square, providing a city centre presence of a major commission throughout the festival. The skip, an everyday object found on the street is a readymade for Batchelor. Here a skip is transformed into something which 'hums' with its local environment, exploring colour through the hues of neon and artificial materials of the urban environment. The skip is a commonplace object of every town and city and rarely gets a second glance. Here the skip is given a glowing makeover with the addition of delicate neon tubing that traces its dented contours. *Skip* quietly glows by day and rather less quietly at night in Bartholomew Square.



Brighton Palermo Remix

5 – 27 May

Wed – Sun 12.00-18.00

**The Regency
Town House
13 Brunswick Square
Hove BN3 1EH**

FREE

Artists talk

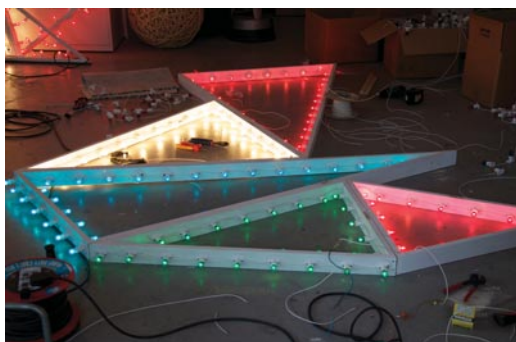
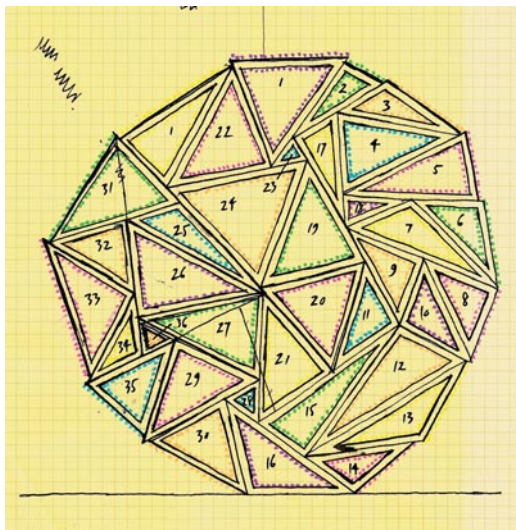
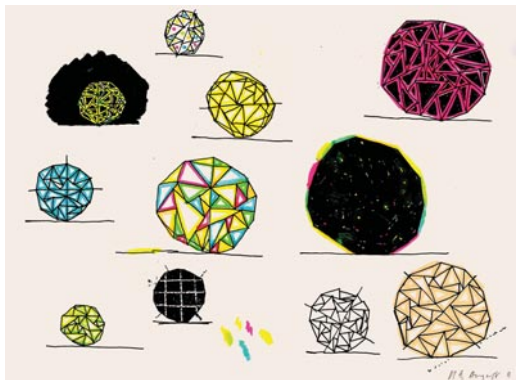
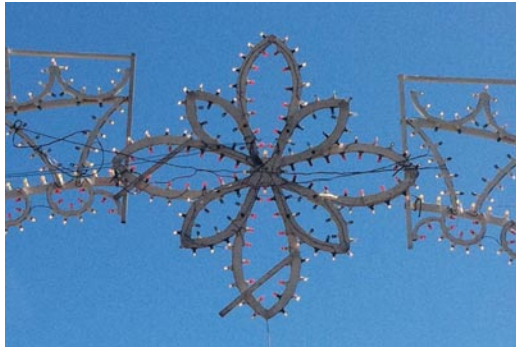
15 May

18.30

Old Courthouse
118 Church Street
Brighton BN1 1UD

To reserve a place,
please visit:
www.housefestival.org
and go to **events**

FREE



For this HOUSE 2012 and Brighton Festival co-commission, prompted by the festival context, Batchelor is working with a specific form of traditional street festival illumination that he first encountered in Italy two years ago. Fabricated from sections of whitewashed timber and punctuated with hundreds of small coloured lights, these highly decorative structures are hung across streets as a part of summer festival celebrations.

Brighton Palermo Remix makes a connection between two quite different coastal towns and is a development of the artist's long term interest in forms of street decoration and illumination. It is also in part a response to the architectural period details of The Regency Town House, a Grade I listed Terraced house (1824-28) designed by Charles Augustin Busby.

Batchelor's current preoccupation with festival illuminations combines here with an interest in the interior decoration of The Regency Town House; visual prompts include Busby's interior and exterior 'modern embellishments' including the balconies of fine ironwork, curved bow windows, stained glass oriels and ornamental details of the corning and ceiling centre pieces where chandeliers would have previously hung. These domestic scaled wooden structures adorned with coloured lights are sited within the formal rooms of the main house, the parlour, dining room and drawing rooms.

Working in this way, Batchelor will create a street festival experience that combines the vernacular of seaside architecture, (its arcades and illuminations) with the Regency influence. The work will express something of the hedonist character for which Brighton and its Regency history is renowned.

Batchelor has exhibited internationally over the last two decades, including shows at the Paco Imperial, Rio de Janeiro; Galeria Leme, São Paulo; MoMA, New York; Tate Britain; and the South Bank Centre, London. At the end of May this year he will exhibit a mid-career survey of work at the Gemeentemuseum, The Hague.

*Street decorations,
Palermo Italy (top).*

*Preparatory drawings for
Brighton Palermo Remix
(centre top, centre lower).*

*Brighton Palermo Remix
under construction (left).*

BRIGHTON
FESTIVAL 2012

The Regency Town House



Brighton Palermo Remix, under construction at Batchelor's studio.

3

Related works

Alongside the new commissions, a selection of work is to be sensitively sited in The Regency Town House Basement, an extraordinary domestic setting, that still echoes its past, in a warren of servants quarters and rooms. Here Batchelor's work will have interplay with the character of its surrounding environment, providing moments of both subtlety and brilliance.

Works to be included are a combination of 2D and 3D works, including the complete Found Monochromes series shown as a projection for the first time in the UK, Idiot Stick, white works including White Blob and White Parapillar and a selection of various table top works sited in the former Regency servants kitchen.

5 – 27 May

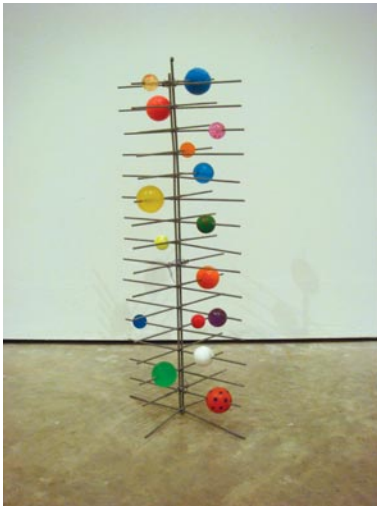
Wed – Sun 12.00-18.00

**The Regency Town House
Basement
10 Brunswick Square
Hove BN3 1EH**

FREE



*Parapillar (above),
White Blob (left).*



*Prepillar (top),
 Parafence (centre),
 Prepillar (bottom),
 Idiot Stick (left).*

4

Paper Trail

4 May – 10 June

Wed – Sun
11.00-17.00

18 & 19 May
open until 21.00

Phoenix Brighton
10-14 Waterloo Place
Brighton BN2 9NB

Also various locations
around the city, see
www.housefestival.org
for details

FREE

Artists talk

24 May
18.30
Phoenix Brighton
as above

FREE

Deborah Bowness makes wallpapers. Her unique domestic designs furnish interior spaces with an unexpected dimension: *trompe l'oeil* produced through a photo-realist twist. Beautiful and functional they are handmade in England, through a combination of digital printing, silk-screen and hand painting. The rolls of wallpaper come as ready-mades, specially made, machine made and paper cuts outs. All of Bowness's work is designed to interact with the space in which it is placed.

For HOUSE 2012, Bowness proposes to take the wallpaper out of the home and into the urban and street environment of Brighton & Hove. *Paper Trail* stretches between Phoenix Brighton and The Regency Town House in Hove. Each site along *Paper Trail*, has been identified by Bowness so that her wallpaper rolls and cut-outs have an interesting interplay with their surroundings. Some works are discreet, placed in shop windows, whilst others are bolder interventions, pasted up around the city on walls that have inspired her. The combination of pasted objects and their new surroundings allows the viewer to explore the process of domestic displacement, creating stage-sets and still-lives in unexpected corners, fascias, windows and walls throughout the city.

At Phoenix Brighton Bowness has installed a wallpapered wall into the North Gallery, where an evolving projection of photo-stills documents Bowness' paper interventions in various locations across the city.

"I currently use wallpaper as a means to put images into homes. I create photo real trompe l'oeil wallpaper installations featuring life size domestic objects.

In response to the work of David Batchelor, I want to challenge my usual aesthetic and nostalgic response to the objects around me. I will endeavour to see things differently, extending my hunt for domestic subject matter to the streets.

Beyond its instant aesthetic appeal there is a deliberate intention to challenge the homely preconceived notions of decoration, the decorative and decorating".

For details of locations in the city where Bowness' interventions can be found, see www.housefestival.org and Phoenix Brighton.

PHOENIX brighton
gallery artists studios education





Shelf life

4 May – 10 June

Wed – Sun
11.00-17.00

18 & 19 May
open until 21.00

Phoenix Brighton
10-14 Waterloo Place
Brighton BN2 9NB

Also other locations, see
www.housefestival.org
for details

FREE

Artists talk

17 May
18.30
Phoenix Brighton
as above

FREE

Packaging comes in many forms. Supermarket logistics packaging, or 'collation' trays, serve to transport and present to the consumer a select group of products, assisting the shelf-stacker to re-stack shelves using trays of pre-packaged goods. Artist Robin Blackledge has for this project frequented his local supermarket in Brighton not to buy milk or biscuits, but to alleviate them of plastic containers used to display items for sale, including yogurt, carton desserts, cheeses and such like. They create orderly neat rows, easy on the eye, a plastic membrane that is almost invisible yet eminently functional and purposeful.

The inherent beauty of these objects interests Blackledge. They suggest a totemic aesthetic that has arisen out of the process of design and it's function - objects that assist movement and display and are then recycled. Exploration of these objects first began for Blackledge with making positive molded forms from the plastic trays. These instantly suggested an evocative parallel with the modular buildings where they are manufactured.

Blackledge's installation for HOUSE uses casts of the modular plastic supermarket trays to expand their formal, iconic and aesthetic associations.

Blackledge has sourced an aggregate from Spanish Dolomite (marble dust) which, when rendered in concrete, gives the resulting forms an altogether more serious tone and tactile appeal. This refinement process of ingredients, from raw cement to 'terrazzo', mirrors society's yearning for betterment. It is his 'finest' range, apeing a certain supermarket's selling strategy. For HOUSE 2012, Blackledge is producing small batches of these forms, creating consumer totems of sorts, placed directly on the walls and as a larger 'city', radiating their aesthetic 'weight' and sculptural architectural qualities. As a collection, they hint at other macro to micro narratives where the objects become buildings, forming towns & cities that seem somehow familiar.

In addition, examples of these totems can be found across the city. For details of locations visit www.housefestival.org

6

Help Me Get My Feet Back On The Ground



4 May – 10 June

**St Peter's
Church Gardens
London Road
Brighton BN1 4GU**

also

**Phoenix Brighton
10-14 Waterloo Place
Brighton BN2 9NB**

Wed – Sun
11.00-17.00

18 & 19 May
open until 21.00

www.housefestival.org
for more details

FREE

Artists talk

10 May
18.30

Phoenix Brighton
as above

FREE

Le Breton works on temporary, site-specific sculptural projects. She explores the tension between the public and private realm by placing domestic objects in a civic site. Her work explores the relationship between people and places; how we respond to and form our environment, and how our environment forms us. She combines everyday, household items with living growing materials and uses existing spaces as a basis for transformation and intervention. Counter to a house representing security, Le Breton will imply financial instability through an installation that brings domestic anxiety, outside.

For HOUSE 2012, Le Breton takes a large, circular, brightly coloured floral carpet, from which she has cut letters, and places it on the north lawn of St. Peter's Church Gardens, in central Brighton. The carpet is used as a stencil on the grass. Where the grass is covered by the carpet it will die back; where the lettering is cut out, the grass will continue to grow. After the first three weeks of the festival the carpet will be removed, leaving the cut out letters visible, spelling out the words directly on the grass and creating a drawing of the 'inside space' outside on the lawn.

The carpet stencil reveals the Beatles famous song lyric 'Help Me Get My Feet Back on the Ground'. The positive aspect of the stencil is installed along the South Corridor Gallery at Phoenix Brighton. Le Breton's work often has a labour-intensive handmade quality. By isolating and extending mundane activities Le Breton uses obsession and repetition to create something extraordinary out of the ordinary.

'I want to explore the concept of interior space as either a protection from, or connection to the rest of the world. I am interested in the transition from the inside to the outside, from private to public, both literally as a physical journey, and conceptually as an inner journey, from a private sense of self to a lived experience of being in the world.'



Masking Tape Intervention: Lebanon 1989

4 May – 10 June

Wed – Sun
11.00-17.00

18 & 19 May
open until 21.00

Phoenix Brighton
10-14 Waterloo Place
Brighton BN2 9NB

FREE

Artists talk
5 May
17.00

Phoenix Brighton
as above

FREE

Helene Kazan's mixed media installation for House 2012 is based around the research and methodology developed in the making of her short film *Masking Tape Intervention: Lebanon 1989*.

The film is entirely generated from a single archive photograph taken of the kitchen in the flat where her family lived, just before their migration in 1989, during the Lebanese civil war. From this archive photograph, 1,690 images were generated to make up the four minute and fifty second stop frame animation.

Each image occupies a single moment within a day, narrated by a testimony which outlines the specific pressures that led to the family's decision to emigrate. The film enables a theoretical framework and point of reference for each of the components that will be exhibited as part of the labyrinthine installation.

This includes the original archive photographs, alongside the scale model and drawings developed from the original photograph of the kitchen. As part of the project, Helene will be at the exhibition on 19th May and 9th June from 3pm – 5pm, performing and recording further aspects of the research. As part of the project and its investigation into our emotional relationship with the domestic environment, viewers will be invited to share their own thoughts, memories and personal artefacts in response to the project and its investigation into our emotional relationship with the everyday architecture of the home.

8

Hangover Square

'Earl's Court in the rain... The summer had crashed: it had crashed at Brighton: it would never rise again. Only rain now – the grey, wet end of hope and love.'

To mark the 50th anniversary of the death of Patrick Hamilton - iconic author, saloon bar laureate and former Hove resident - this unique art installation revisits his most famous work.

Set in the seamy watering holes of Earl's Court and a rain-swept Brighton on the cusp of World War II, Hangover Square is widely regarded as Patrick Hamilton's masterpiece. Now CINECITY and artist / production designer Anna Deamer, with students from the University of Brighton and City College, present a film set for an imaginary screen version of this bleak hymn to obsessive desire, transporting the visitor to the time and place depicted in the work.

Two interiors, inextricably linked, form the heart of the exhibition: in the South Gallery a smart Brighton hotel room: in the North Gallery, a seedy London flat where the climactic crime scene is re-imagined. Offering connections and clues to the rest of this darkly comic novel, the exhibition allows the viewer to weave their own narratives upon the empty rooms.

Created for CINECITY's 10th anniversary. Presented by CINECITY. Commissioned by HOUSE 2012. In association with the University of Brighton and Brighton Festival.

5 – 27 May

Mon – Fri 11.00 – 19.00
Sat – Sun 11.00 – 17.00

University of Brighton Gallery
58-67 Grand Parade
Brighton BN2 0JY

FREE

Artists talk

Tim Brown and Anna Deamer
19 May 14.00
University of Brighton Board Room
58-67 Grand Parade
Brighton BN2 0JY

To reserve a place, please visit:
www.housefestival.org and go to **events**

FREE



Model for Hangover Square, 2012 (top)

Hangover Square, The Nightingale, HOUSE 2011 (above). Image: © Bernard Mills

CINECITY



University of Brighton



Unravelling Nymans

Unravel the fantastical world of the Messels at Nymans



Clockwise from left: Alec Stevens, Lauren Frances Adams, Matt Smith and Gavin Fry

4 May – 31 October 2012

**Nymans
Handcross
Haywards Heath
East Sussex
RH17 6EB**

01444 405250
www.nationaltrust.org.uk/nymans
www.unravelled.org.uk



**National
Trust**

unravelled | arts

Unravelling the National Trust is a unique concept by a group of artists and makers who work with craft in what they refer to as 'extreme, alternative and conceptual ways'. The project takes place over a three-year period and kicks off in May 2012 for six months at Nymans House and Gardens, in the picturesque High Weald landscape of Sussex.

Nymans is a National Trust property known primarily for its exquisite English garden, which has been designed and developed by three generations of the Messel family. Unravelled has introduced twelve new commissions into the house and grounds by artists using or subverting the notion of craft. The works are all site-specific and are designed to create interventions within the historic house setting or within the gardens. The aim of Unravelled at Nymans is to bring together a group of artists who can lend an unusual perspective to the story of the house, revealing something of its history and bringing to life the lives and times of members of the intriguing Messel family. The artists made a number of trips to the property, their research bringing out themes of childhood and play, as well as dressing up and theatricality.

The commissioned artists are; Lauren Frances Adams, Lucy Brown, David Cheeseman, Steven Follen, Sally Freshwater, Gavin Fry, Caitlin Heffernan, Guy Holder, Matt Smith, James Sutton, Alec Stevens and Julian Walker.

HOUSE 2012 has programmed a series of talks, one by each artist. Informal and informative these events provide an opportunity to find out more about the process of developing and making the work and the artists' wider practice.

Admission to all talks is FREE

- | | | |
|---------------|--------------|--|
| 5 May | 17.00 | Helene Kazan
Phoenix Brighton
10 – 14 Waterloo Place
Brighton BN2 9NB
01273 603700
info@phoenixbrighton.org
www.phoenixbrighton.org |
| 10 May | 18.30 | Caroline Le Breton
Phoenix Brighton (as above) |
| 15 May | 18.30 | David Batchelor
Old Courthouse
118 Church Street
Brighton BN1 1UD |
| 17 May | 18.30 | Robin Blackledge
Phoenix Brighton (as above) |
| 19 May | 14.00 | Tim Brown
and Anna Deamer
Brighton University Board Room
58-67 Grand Parade
Brighton BN2 0JY |
| 24 May | 18.30 | Deb Bowness
Phoenix Brighton (as above) |

Visit www.housefestival.org and go to **events** for full details, updates and to reserve a place.



Robin Blackledge talks about his work.

Those attending exhibitions and artists talks at Phoenix Brighton might wish to try the new Green Room café

The café is a meeting place for artists and art lovers, open throughout the Brighton Festival and offering coffee, cake and creativity.

Thursdays through Sundays 11 am – 5 pm,
plus additional evening hours www.phoenixbrighton.org
for details of special events in the café.

University of Sussex 50th Anniversary Public Art

We are delighted that Turner Prize winner and Sussex alumnus **Jeremy Deller** is currently preparing a display on campus: **Sussex Incidents**, which draws from Sussex's extensive archive.

This display opens on the 23 April in the Library Exhibition space and will run until 18 May.

Jeremy is also co-curator with Professor David Alan Mellor on an exhibition of **Bruce Lacey** at the Camden Arts Centre.

This exhibition will open on 7 July and run until 16 September.

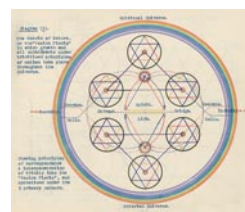
We are very proud to be collaborating with Jeremy on these projects, and they will form an extremely important part of our 50th anniversary celebrations. Together, they will also help to build on the University's ongoing involvement with the contemporary visual arts and provide a platform for creative and visual arts at the University.

Mike Nelson:

The United Kingdom representative at the Venice Biennale in 2011, Mike Nelson, has been drawing upon the resources of The Archive of Modern Conflict (AMC) in London and will be contributing an installation following on from Jeremy Deller, at the University of Sussex Library Exhibition space. This will be composed from some of the extraordinary artifacts to be found at the AMC.

The exhibition, in the Library Exhibition, will run from 23 May until the 29 June.

For further information
<http://www.sussex.ac.uk/fiftyyears/>



US50
University of Sussex



E.Haines, *The Old Brighton Stargazer*, 19th century (left)

David Miles,
Man, 2012 (above)

David Miles The Hole in Mount Hakone 1 May to 21 October 2012

Prints & Drawings Gallery
Brighton Museum & Art Gallery
Royal Pavilion Gardens
Brighton BN1 1EE
03000 290900
www.brighton-hove-museums.org.uk

Open Tue-Sun 10am-5pm
Closed Mondays
(except Bank Holidays 10am-5pm)

Free admission

Supported using public funding by
**ARTS COUNCIL
ENGLAND**

Brighton & Hove Museums

PHOENIX brighton

gallery artists studios education

OPEN STUDIOS

OPEN TWO DAYS IN THE FESTIVAL

Sat 19 May and Sun 20 May
11AM–5PM

Professional artists and designer-makers open their studios inviting you to discover more about their creative practice. It is a great opportunity to go behind the scenes, talk to artists first-hand, and see work in progress. Visit the website for more details.

www.phoenixbrighton.org

10–14 Waterloo Place · Brighton BN2 9NB

TOOVEY'S

Contemporary Art Auction 2012

Saturday 21st July at 6pm



Shell Form
by Peter Beard
Estimate £3000-5000

www.tooveys.com



Louise Bristow: Perfect Forms

Artists Open Houses

Brighton & Hove
weekends 5-27 May 2012

The Artists Open Houses festival provides a unique opportunity for visitors to view an array of work from contemporary and original local artists and makers within the artists' homes - where you can meet the artists and buy work directly from them.



To find out more
visit: **aoh.org.uk**



www.aoh.org.uk

tom the old market

take the time to
discover TOM...

the table:

new and improved



"Sublime"
Time Out,
"Astonishingly
accomplished
puppetry"
The Telegraph

Mon 07 May 17:00 & 20:00
/ Tue 08 May 20:00

naive dance masterclass

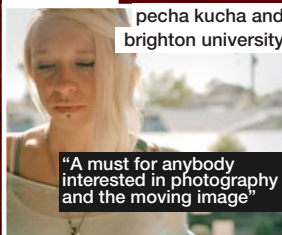


"surreal,
weird and
brilliant"
Total Theatre

Sundays 06 & 13 May 19:00

miniclick

pecha kucha and
brighton university

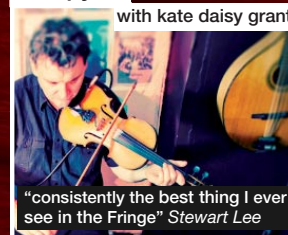


"A must for anybody
interested in photography
and the moving image"

Wednesday 09 May 19:00

nick pynn

with kate daisy grant



"consistently the best thing I ever
see in the Fringe" Stewart Lee

Tuesday 15 May 20:00

PLUS Many More Shows, Louise Bristow exhibition, Free screenings of
Beach Party Animal and TOM's Bar Open 11am - Late during May

twitter/facebook: **TOMvenue** | Upper Market St, Hove

01273 201 801 | **www.theoldmarket.com**





Brighton

Palace Pier