



## INTRODUCTION

On the 20<sup>th</sup> August 2011 Red Arrows pilot Flight Lieutenant Jon Egging was tragically killed when his aircraft crashed in the north of the borough following an aerobatic display over the seafront at the Bournemouth Air Festival.

The Council responded positively to strong public opinion following the death of Flt Lt Jon Egging, and gave a public commitment to provide a memorial in the town, of a format and at a location of Flt Lt Egging's family's choosing (subject to planning policies).

Bournemouth Borough Council is working closely with the pilot's family to commission a Memorial that should be in place in time for the 2012 Bournemouth Air Festival.

## THE JON EGGING TRUST (JET)

The Jon Egging Trust <http://www.joneggingtrust.moonfruit.com/> has been set up as a registered charity by the family, friends and colleagues of Flt Lt Jon Egging.

Their mission is to give young people from disadvantaged backgrounds new opportunities to help them achieve their potential.

Before he died Jon became passionate about inspiring young people to take control of their lives through a love of flying and enthusiasm for teamwork. The Jon Egging Trust has been set up by Jon's wife Emma to realise his dream.

## SITE LOCATION

Please follow visit [www.multimap.com](http://www.multimap.com) and enter 'East Overcliff Drive, Bournemouth' into the search field to view the site. At the end of this document is a plan of the agreed location of the memorial, a green space site on the cliff top adjacent to the East Cliff Lift, opposite Meyrick Road.

## THE SITE

The site overlooks Bournemouth seafront and the setting for the annual Bournemouth Air Festival. The site has been chosen by Jon Egging's widow with the assistance of Bournemouth Borough Council.

The cliff lift, constructed in 1908, forms the principal access point down to the seafront in this area. The cliff lift operates between Easter and the end of October and carries approximately 240,000 passengers a year. An additional year round pedestrian access 'zig zag' down from the cliff top exists 200 metres west of the cliff lift. The Cliff Lift is not a listed building.

Close by is an existing plaque commemorating a Spitfire pilot killed in an air accident over the bay in 1947.

The East Cliff area surrounding the site is a Conservation area and is principally composed of hotels.

The green space site for the memorial is managed by Bournemouth Borough Council's Parks Department. The Cliff Lift is operated by the Council's Seafront Operations team.

Bournemouth's award-winning seafront stretches a distance of 5 ½ miles and forms the principal attraction for the town's visitor economy and plays host to over 4.2 million visitors a year. The Red Arrows have a long association with the town, having displayed to huge crowds for many years. The Bournemouth Air Festival, established in 2008, is the UK's largest and attracts crowds of up to a million over four days each year. It is the town's principal free public event and the Red Arrows displays form the highlight of the Festival.

## **THE BRIEF**

A competition for Bournemouth's school children to design a concept for the memorial artwork has been launched.

An experienced Artist is sought to:

- Assist the Project Panel in the final selection from shortlist of a winning schools design concept for the memorial artwork
- Undertake detailed design work of the selected design concept, ensuring the winning school / class / pupil(s) contribute to the design and nature of the finished piece. It is envisaged that there will be a minimum of three half day sessions to work with the young people in the winning school.
- Secure any required planning permissions.
- Construct, deliver and install the finished memorial on site. Enabling the school to engage with the construction process.
- Work closely with the Parks Dept Landscape Team on improvements to landscape setting for the memorial (to be delivered by the Council separate to this commission)
- Report regularly to the Project Panel and attend meetings when required.

Planning permission will be required. The artist will work closely with the Project Panel providing timely assistance and information as required to secure planning consent.

## ***Design Issues / site constraints***

The permanent Memorial Artwork must:

- Be constructed to withstand a harsh marine environment - including saline atmosphere and high winds
- Have a minimum lifespan of 20 years - preferably longer
- Be easy to maintain, minimise vandalism, and enable easy removal of graffiti
- Have a minimal pollution impact in both the immediate and wider vicinity.
- Be designed, manufactured and installed using sustainable materials, processes and techniques wherever possible.
- Not cause an unnecessary safety distraction / hazard to passing motorists
- Be designed & constructed with regard and sensitivity to the character and appearance of the surrounding East Cliff Conservation Area, in line with the

policies contained in the adopted District Wide Local Plan 2002 and the forthcoming Borough Wide Core Strategy, known as the Bournemouth Plan.

## **ACCESSIBILITY DESIGN ISSUES**

It is intended that the Memorial Artwork will be accessible by members of the general public by way of a path from the pedestrian pavement. Any proposed signage within the Memorial should be fully accessible.

## **SELECTION CRITERIA**

Artists will be short-listed on the basis of a demonstrable track record in the creation, production and installation of permanent, high quality artworks in the external public realm. Experience of working with school children in the development of public artworks will also need to be demonstrated as will project and budget management skills. The Artist must possess an enhanced CRB check and will be expected to provide evidence of up to £2 m public liability cover insurance.

## **APPOINTMENT PROCEDURE**

Your initial submission, for expression of interest, should include the following:

1. A letter stating:
  - Why you are interested in the project
  - How you would apply your existing knowledge, skills & experience.
  - Details of previous related work involving children and young people
2. Your current CV
3. 12 images of your work. Please send **hard copies** of these and an S.A.E if you would like these returned to you.
4. The contact details of two referees for work completed within the last 3 years.

## **APPOINTMENT TIMETABLE**

1. Initial submissions deadline: 5pm on Monday 16<sup>th</sup> January 2012
2. Shortlisting to take place: Wednesday 18<sup>th</sup> January 2012
3. Interviews to take place: Wednesday 25<sup>th</sup> January 2012
4. Appointment of artist: Friday 27<sup>th</sup> January 2012

At interview, short-listed artists will be asked to give a presentation of their past work and an initial response to the site and project. We are not asking for proposals but a discussion about how past work relates to the opportunity at this site and thoughts on the approach that might be taken. Each short-listed Lead Artist will have 45-50 minutes for presentation and questions.

## **CONTRACT**

The successful artist will be issued with a contract by Bournemouth Borough Council to which this brief will be appended. The artist will be employed by Bournemouth Borough Council.

## JON EGGING MEMORIAL PROJECT PANEL

The panel will consist of:

Emma Egging - Widow of Jon Egging  
Dawn Egging - Mother of Jon Egging  
Dave Davies - Red Arrows Pilot (Red Eight)  
Carol Maund - Arts Development Officer, Bournemouth Borough Council  
Louisa Clark - WAVE Arts Education Agency  
Andrew Emery - Service Development Manager, Bournemouth Seafront  
Georgia Turner - Corporate Communications Manager, Bournemouth Borough Council

### Stage 1 - Concept Design

Following appointment the Artist will be expected to participate in the selection of a shortlist and winning memorial design concept.

A competition to design the memorial concept will be launched on 12<sup>th</sup> December 2011 and issued to all of Bournemouth's Schools (primary and secondary). The design brief is attached. Schools will work on their design submissions in January 2012. Designs will be short listed and a winning design selected week commencing 13<sup>th</sup> February 2012.

### Stage 2 - Detailed Design

Following selection and approval of a Concept Design, the artist will commence detailed design. The Artist will be expected to work closely with the winning school / class pupil(s) through the detailed design and build - holding a minimum of 3 engagement sessions. The following schedule will apply:

Detailed memorial design work including agreement of landscape works with Parks Dept Landscape Design Team	05/03/2012 - 30/03/12
Prepare planning application (artists responsibility)	W/C 26/03/12
Planning permission: 6 - 8 weeks	April - May 2012
Ground works, hand landscaping and planting (by Parks Dept)	June 2012
Production of memorial artwork by artist	June / July 2012
Installation of memorial artwork	By 31/07/12
Launch / unveiling	W/C 13/08/12
2012 Bournemouth Air Festival	30/08/12 - 02/09/12

The Artist will remain in regular liaison with selected members of the Project Panel whilst developing detailed designs. The Artist will be asked to present to the Project Panel all detailed designs for the commission. The detailed designs will include:

- - Sketches to illustrate all elements of the Memorial, fully annotated with materials, fixing methods, and any other relevant information.

### Stage 3 - Project Completion

The artist will ensure installation of the Memorial by the 31<sup>st</sup> July 2012.

**BUDGET AND FEES:**

The maximum overall budget for the detailed design, production and installation of the artwork is £8,500 inclusive of VAT, materials, Artist's fees, planning permission and expenses. No additional expenditure arising will be entertained. Meetings will be in Bournemouth.

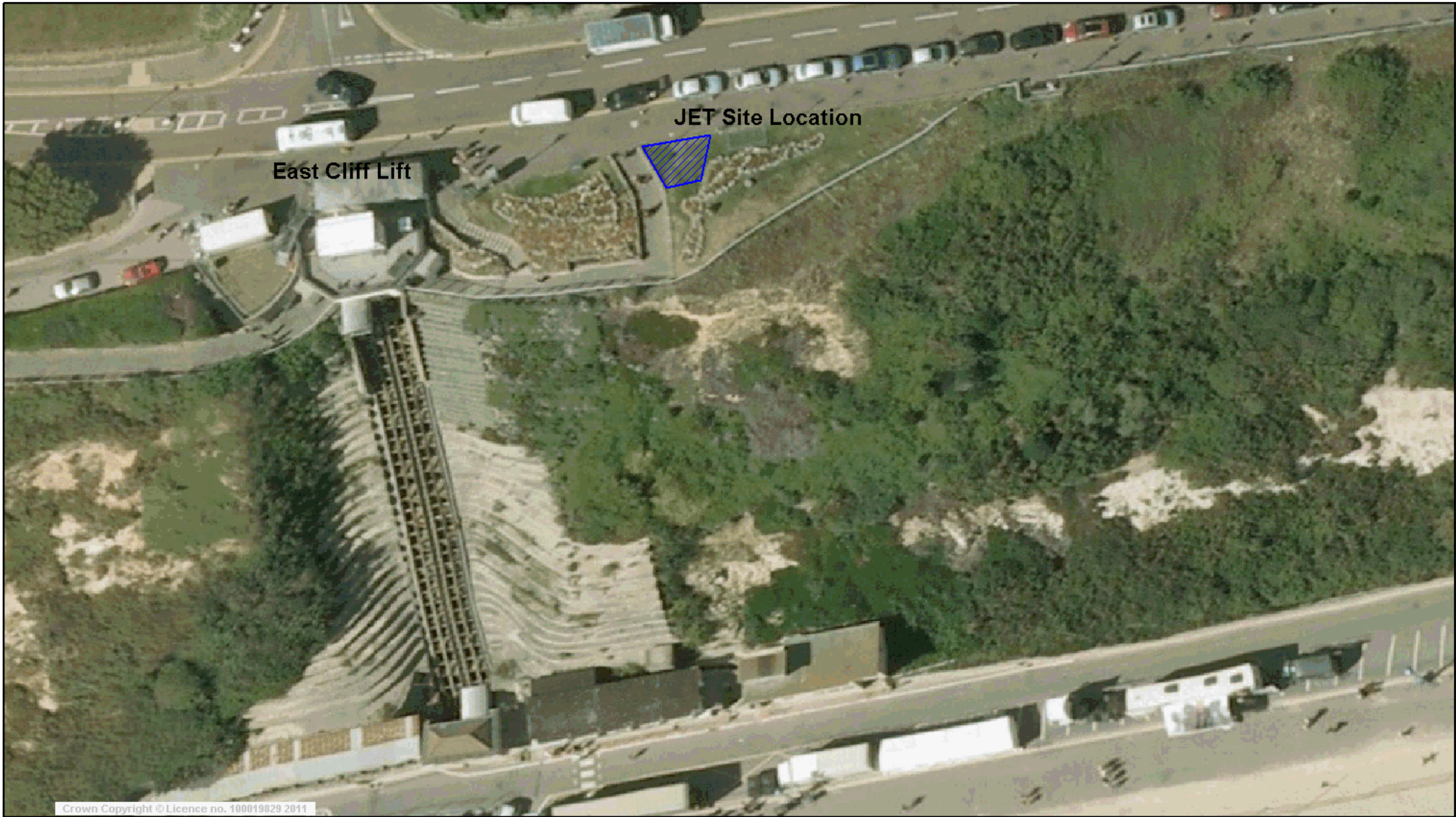
**SUBMISSIONS:**

Please send submissions (marked with reference: **JEM**) to be received by 5pm on Monday

16<sup>th</sup> January 2012 to:

Andrew Emery  
Service Development Manager  
Bournemouth Seafront Information Office  
Undercliff Drive  
Bournemouth BH2 5AA

Please contact Andrew Emery, Service Development Manager on 01202 454774 or email [andrew.emery@bournemouth.gov.uk](mailto:andrew.emery@bournemouth.gov.uk) if you have any other queries, concerns or requests for further information. Responses to requests for further information or clarification will be posted on the Council's website at [www.bournemouth.gov.uk/joneggingmemorial](http://www.bournemouth.gov.uk/joneggingmemorial) . Please check for regular updates.



Crown Copyright © Licence no. 100019829 2011



### JET Memorial Site Location

Scale 1/500

Centre = 409630 E 90945 N

Date 12/12/2011

Emery A



This map is reproduced from Ordnance Survey material with the permission of Ordnance Survey on behalf of the Controller of Her Majesty's Stationery Office.  
© Crown copyright. Unauthorised reproduction infringes Crown copyright and may lead to prosecution or civil proceedings. Bournemouth Borough Council - 100019829. 2011

The scale indicated on this drawing is approximate only and should not be used for taking accurate measurements.