

**New Wakefield Westgate Rail Station - Artist Brief - DRAFT**

(14.06.13)

**Detailed Brief: Public Art Commission for Sculpture Space in Forecourt of New Wakefield Westgate Rail Station****1. Context**

Beam is to work on behalf of Wakefield Council / East Coast and Network Rail to undertake the management of a public art commission to be situated in the forecourt area of Wakefield Westgate Railway Station to enliven the station, improve the experience of users and travellers, and promote a positive image of the Station and Wakefield, as a gateway to the Yorkshire Sculpture Trail.

**1.1 Guiding Themes**

- The artwork will create a statement about Wakefield as an innovative place where arts and culture are of the utmost importance
- Linking the station to the city and its people and communities
- Welcome, delight, intrigue, animate

Beam will work with a project panel to guide the project including representatives invited from Beam, Wakefield Council, Network Rail, East Coast, The Yorkshire Sculpture Park and The Hepworth Wakefield.

**2. Aim**

The overall aim of The Westgate Station Public Art Project is to exemplify Wakefield's cultural and artistic creativity and heritage to enliven the station to local people, visitors and people passing through the station.

**3. Objectives**

- To exemplify Wakefield as an innovative, cultural and artistic destination through the artwork/s
- To develop innovative artwork/s that create an element of engagement and delight
- To develop artwork/s that have impact at all times of day and in all seasons

**4. Expected Outcomes**

- Create an artwork/s in two and or three dimensions
- The artwork/s will have an impact that creatively engages local people and visitors to Wakefield, who use or visit the rail station.

**5. Deliverables**

- Attendance at meetings
- 1 public art commission as described in section 4.
- The artwork will have a visual impact.
- The artwork will be easily implemented and have negligible maintenance
- The artwork will be robust and flexible enough to be successful at different times of day and in all weathers
- The artwork will not require any power or lighting
- The artwork will have a minimum life span of 5 years
- Participation in a community engagement project (funded separately through Arts Council England)

## 6. Location

The artwork/s will be sited in a designated area in the forecourt area of the new Wakefield Westgate Railway Station. The area is approximately 5 by 5 metres . For images of the site see Appendix I.

## 7. Key Constraints

The space has health and safety constraints.

- Due to the accessible location the public can access the artwork physically. Any installation must be designed to be robust to withstand mis-use/ vandalism.
- The artwork must not constitute a distraction to drivers passing or entering the station forecourt.

## 8. Process and Timeframe

Programme 2013/14	July	Aug	Sept	Oct	Nov	Dec	Jan	Feb
	Week commencing:							
<b>Project Implementation Phase 1 - Artist Selection Process</b>								
Shortlisted Artist Interviews & Appointment of 3 to undertake concept designs	22nd							
Artist concept design presentations		19th						
1 Artist Concept Agreed		19th						
<b>Project Implementation Phase 2 - Artist Contract to Project Completion</b>								
1 Artist Design and Commission Contract Complete (WMDC)		19th						
Artist Detailed Design Presentation			16th					
Planning application (6 weeks)			23rd Sept – 4th Nov					
Production/ Fabrication Period					11th Nov – 6 <sup>th</sup> Jan			
Installation							13th	
Schedule of defects period							20th – 17th	
Transfer of ownership								24th
Launch (Easter 2014)								

## 9. Artist Fees

**9.1 Phase 1: Concept Design Fee £400** plus VAT as applicable including travel expenses (per artist. 3 artists maximum)

### 9.2 Phase 2: Detailed Design – Completion (1 artist)

**£16,500** plus VAT as applicable

(including concept & detailed designs – research and development, production, materials, installation, public art works, community engagement, installation method statement, decommissioning plan, maintenance plan, insurances as applicable, attendance at meetings and all other costs associated with the work)

## **10. Concept Proposal Stage - Requirements**

Artists will need to deliver a presentation and submit a report (maximum size A3) including the following information:

- Concept descriptions
- Scale drawings / visualisations
- Medium / Materials
- Dimensions
- Location(s) for installation
- Timeframe for installation (preferred)
- Security considerations
- Approach to any public engagement
- Indicative costing (including provision for contingency)

## **11. Detailed Proposal Stage - Requirements**

Artist will need to deliver a presentation and submit a report (maximum size A3) including the following information

- Concept description [further detail to Concept Proposal as applicable]
- Detailed scale drawings / visualisations [as above]
- Medium / Materials [as above]
- Dimensions [as above]
- Location(s) for installation [as above]
- Timeframe for installation (preferred) [as above]
- Security considerations [as above]
- Approach to any public engagement (and informal learning) [as above]
- Submit information requested to support any planning application submission (in liaison with Beam / Wakefield Council)
- Detailed costing (including provision for contingency)
- Technical requirements
- Installation method statement
- Health & Safety risk assessment - installation and in-situ (including security considerations)
- Maintenance and decommission plan
- Artist and identified sub-contractors Public Liability insurance details / other insurances as applicable (please refer to Commission Agreement for further detail)

## **12. Launch Event**

Wakefield Council will collaborate with Network Rail and Beam to deliver an official launch event for the artwork/s installed. The artist will be invited to attend this event to promote their work and the project.

## **13. Permissions**

All work will be subject to relevant permissions being secured – prior to implementation. Artists will need to ensure that any direct participants in engagement activities have completed Media Permission forms – photography / film / web – prior to activities taking place. Beam will require photocopies of Media Permission forms.

## **14. Health and Safety**

Beam's Health & Safety Policy will be applied to the Westgate Station programme. (See Attached documents)

## **15. Insurance**

The artist and any sub-contractors will be required to provide details of Public Liability and other relevant insurances as requested by Network Rail & East Coast (Please refer to Commission Agreement.)

## **16. Communications and PR**

Artists are encouraged to document work-in-progress so that this can also form part of promotional activity that could be utilised online or in printed materials. All communications and PR will be undertaken by Wakefield Council.

## **17. Copyright**

Copyright in the designs and the work will be retained by the Artist in accordance with The Copyright Designs and Patents Act 1988.

## **18. Equal Opportunities**

Beam is committed to building an organisation that makes full use of the talents, skills, experience, and different cultural perspectives available in a diverse society. We believe in nurturing a working environment in which people feel they are respected, valued, and can achieve their potential regardless of age, colour, disability, gender, marital or family status, nationality or ethnic origins, race, religious belief or sexual orientation. Beam's Equal Opportunities Policy will be applied to the Westgate Station programme.

## **19 Application Process**

A longlist of artists will be devised from those who have expressed their interest in the commission. Using this list the public art steering group will create a shortlist of artist whom they will invite to interview. Following the interviews three artists will be selected and offered a fee to develop concept proposals. Each artist will present their concept proposals and the public art steering group will select one artist and one proposal to contract from detailed design stage through to implementation.

**Expressions of interest** should be submitted by email to Ann Sweeney [ann@beam.uk.net](mailto:ann@beam.uk.net)

If you are unable to send by e-mail please post a CD including all the requested information below.

**The deadline for applications is Monday 15 July 2013 at 10am.**

Please submit your application either in the form of a pdf document or PowerPoint presentation with a maximum of 12 pages /slides in total – to include the following (in this order):

1. Up to one A4 page detailing your initial response to the brief
2. A Portfolio of work (up to 6 relevant projects – maximum 12 images in total)
3. A CV (including 2 referees)

## **20 Queries**

### **Contact Details**

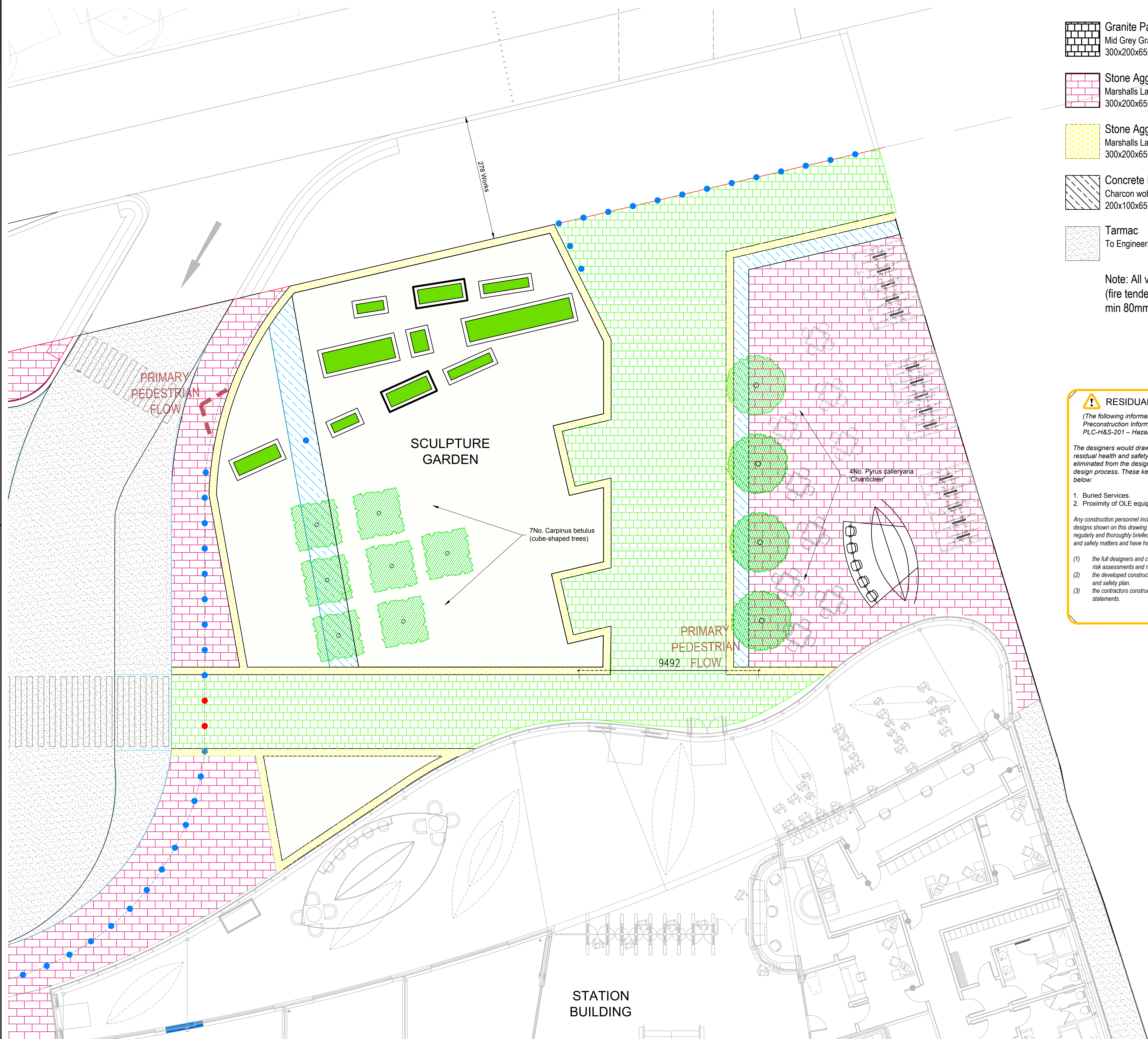
Kate Watson, Project Manager

[kate@beam.uk.net](mailto:kate@beam.uk.net)

01924 215550

Beam, The Orangery, Wakefield, WF1 2TG





Note: All vehicle accessible areas  
(fire tender & service access) require  
min 80mm thickness paving.

**RESIDUAL DESIGN HAZARDS**  
(The following information has been collected from Preconstruction Information and Amey Process PLC-H&S-201 - Hazard Management for Designers.)

The designers would draw the readers attention to the key residual health and safety risks that have not been eliminated from the designs shown on this drawing by the design process. These key residual risks are identified below:

1. Buried Services.
2. Proximity of OLE equipment.

Any construction personnel including operatives intending to construct the designs shown on this drawing should ensure that they have been regularly and thoroughly briefed by the principal contractor on all health and safety matters and have had sight of:

- (1) the full designers and contractors risk assessments and risk registers,
- (2) the developed construction health and safety plan,
- (3) the contractors construction method statements.

- ### NOTES
1. This drawing has been produced in the office of Amey, 27 Tanner Row, York, YO1 6JP. Tel: 01904 601 300.
  2. All dimensions are in millimetres unless otherwise noted.
  3. All levels are in metres A.O.D. unless noted otherwise.
  4. Survey carried out by the Amey Topographical Team in Sep 2012.

P3	F003 Submission	SW	SW	24.04.13
P2	Bollard arrg't amended, planter added.	SW	SW	07.03.13
P1	F003 Submission			
Rev	Revision details	Chkd	Appd	Date

Drawn:	J.Thorne	GRIP 3 Form 01	
Design:	T.Smith	GRIP 4 Form 02	
Chkd:	S.Walker	GRIP 5 Form 03	✓
Appd:	S.Walker	GRIP 5 AFC	
Date:	24.04.13	As constructed	
		Other	



Client

**BUCKINGHAM**  
Group Contracting

Silverstone Road, Stowe, Buckingham MK18 5LJ  
Telephone: 01280 923355 Fax: 01280 812830  
www.buckinghamgroup.co.uk

Project Name

**Wakefield Westgate Station**  
ELR: DOL2, 175 miles 65 chains

Drawing Title

**Landscape Proposals**

Original Drawing Size :	A1	Dimensions :	mm
Scale :	1:100	Copyright	© Amey

Drawing No	CO00664779-CIV-095	Rev	P3
------------	--------------------	-----	----