

THE ALBERT

spaces to play with

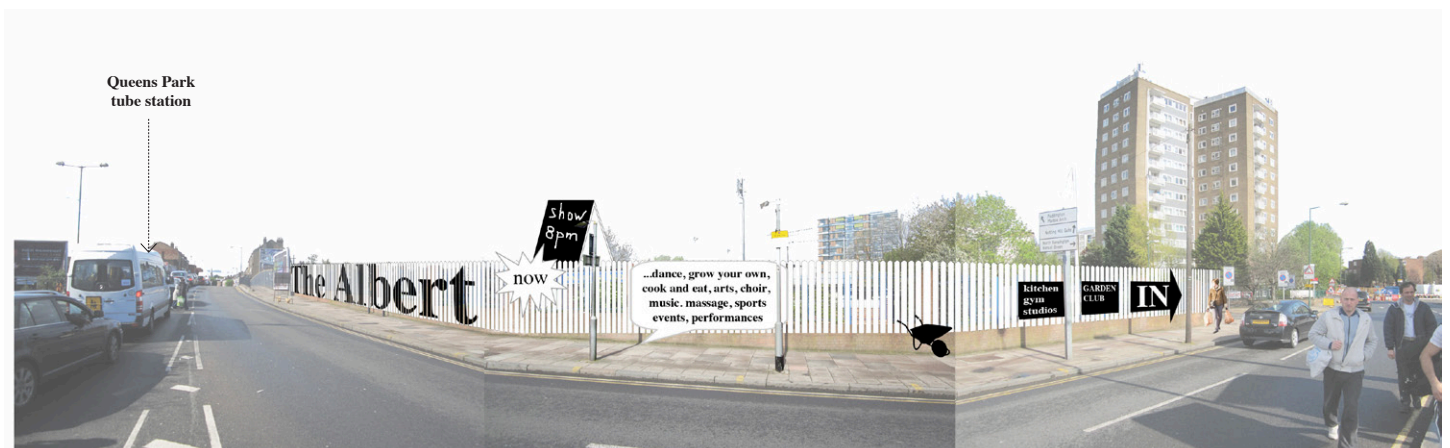
Invitation to the “spaces to play with”
programme at “The Albert” in South Kilborn
(September 2012 - June 2013).

Project management:
What if: projects Ltd
39 Cropley Street
London N1 7HT
www.what-if.info

With:
h2dance
www.h2dance.com

For:
London Borough of Brent

Date:
August 2012



THE ALBERT

From September this year the former Albert Centre and British Legion building on Albert Road, will be transformed into ‘The Albert’, a new pop-up venue for arts and community well-being.

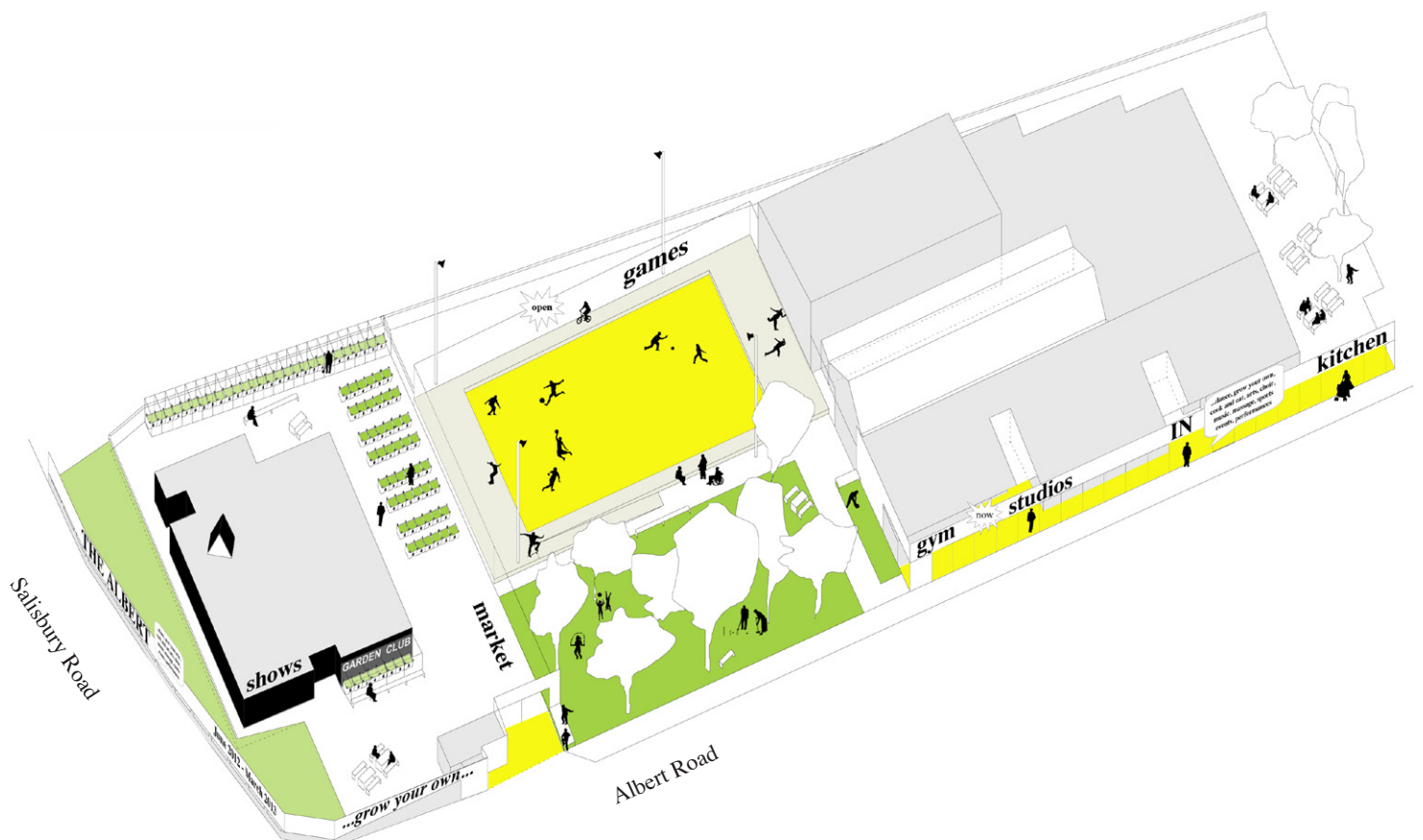
“The Albert” will be opened to the public between September 2012 - June 2013 and provide a new exciting program of events, activities and performance that explore the theme of health and well-being. The ‘Albert’ will bring together a range of playful projects that people can take part in - projects that engage physically and creatively through movement, play, music and song, taste, touch, dance and socialising.

For a limited period, a group of choreographers, musicians, artists, cooks, architects, filmmakers and the unexpected are invited to take up residency at “The Albert”. The local neighbourhood and the general public are invited to embark on experiments and try out something new: sing in a choir, perform as a dancer, grow vegetables, and learn to cook or get physical!

What if: projects will make the outside ballcourt and village green accessible to the public and create a new public space that can be utilised for a multitude of activities and events. An eye catching screen will be constructed to give a new identity to the site and advertise the programme at “The Albert”.

“The Albert” has been commissioned by the London Borough of Brent as a “meanwhile project” and is designed and managed by What if: projects Ltd (www.what-if.info) in collaboration with choreographers’ h2dance.

If you are interested in the residency programme or would like to use spaces for shows, exhibitions or events please contact ulrike@what-if.info (m.07813218079).



RESIDENCY PROGRAMME

Are you interested in space to play and experiment with?

Get involved:

Artist residency programme:

The Albert will provide studio, exhibition, rehearsal and performance spaces to artists, **performers and creative people** from the 17th September to the 30th June 2013. All residents at The Albert will contribute on a monthly basis to a programme of free public events or workshops that facilitate the engagement of the South Kilburn neighbourhood into experiential and creative projects. In return space at “The Albert” will be available rent free but a contribution to the running costs will apply.

Residencies at The Albert can range from 1 week to 10 month and proposals for exhibitions, shows or events are invited as part of the programme. The majority of studio spaces will be allocated to professional artists, performers, architects,... looking for a work space and place to experiment. A monthly contribution to the running costs of the buildings will apply at approx. £2 per m². Studio residents can have access to the sports hall, meeting rooms, exhibition and performance spaces.

Artists in residence are expected to keep the building in good order and help out as feasible with practical tasks such as volunteering as a bar tender during shows, designing programmes, litter pick, clean communal areas etc.

Cooks in residence:

Are you interested in running a pop-up café or restaurant at The Albert? A professional kitchen and dining area for approx. 60 people provides space for an enthusiastic team or individual keen to explore possibilities around healthy eating, cooking, growing food and the arts. In return for space and equipment available at a nominal rent you would contribute to the free public programme through e.g. cooking and healthy eating classes, lunch clubs for elderly, mother and children cooking clubs etc.

Cooks in residence are expected to hold a Level 2 food hygiene qualification. You would work within the context of the artists in residency programme and it is anticipated that the café area might be open during shows and performances.

Apply:

To express your interest in the artist and/or cookery residency programme please send the following information to ulrike@what-if.info by the 4th September:

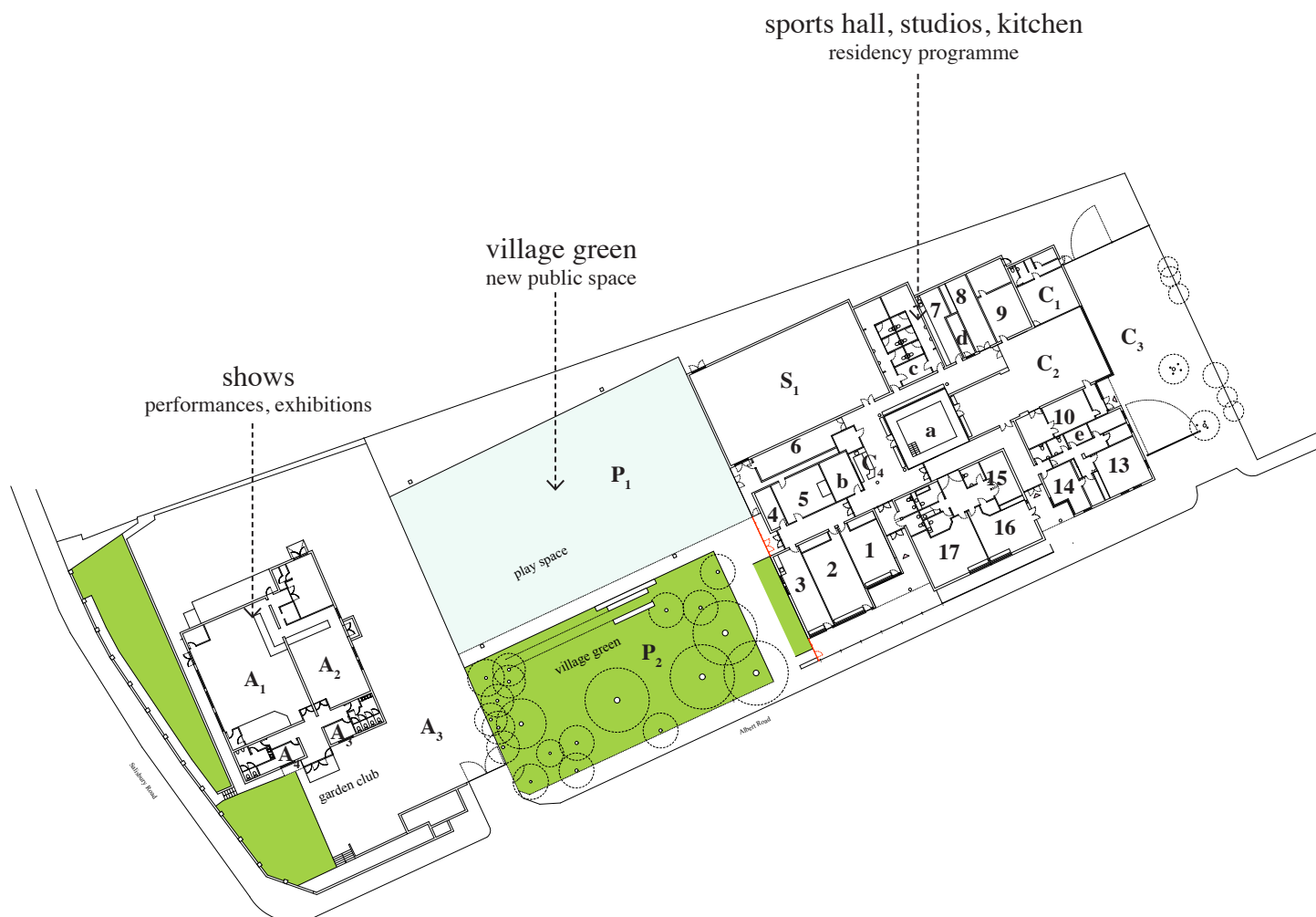
- a description of how you would use the space at The Albert and for how long
- how you would contribute to the public programme of events
- CV

We are planning a site visit and meeting with artist on Monday 10th September 2012 at 4pm. Please let us know if you are available.



SPACES TO PLAY WITH

0.6 hectares



SPACE FOR SHOWS + EVENTS

- A₁ and A₂** 2 function rooms served by bar and kitchen, stage and backstage for performances, exhibitions, music events and for hire (148m², 63m²)
- A₃** Outside tarmac area for food market and allotment, seating and tables, potential exhibition space (861m²)
- A₃ and A₄** Office spaces (11m², 8m²)
- S₁** Sports hall for rehearsals, classes, sports (262m²). Also available for hire to the general public.

KITCHEN RESIDENCY:

- C₁** Professional kitchen with 6burner cookers, worktops, storage spaces, WC (32m² (plus 5m² storage)
- C₂** Dining area (144m²)
- C₃** Outside area with potential for seating or growing food (144m²)
- C₄** Bar (counter, sink) at entrance to sports hall and pool.

STUDIO RESIDENCY:

- 1 - 17** Studio spaces part of artist residency programme and/or booking system. (sizes range from 5-55m²)
- a** Pool area in conservatory structure with glass surrounding and glass roof
- b** Padded treatment room
- d** Storage room
- e** Storage room

LOCATION:

1-5 Albert Road
London
NW6 5DT





A



A₁



A₂



A₃



P₁



P₂



P₁



C₃



C₁



C₁



C₂



C₂



S



C₄



a



b



16



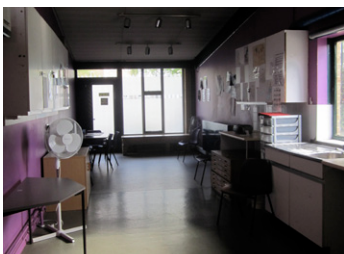
17



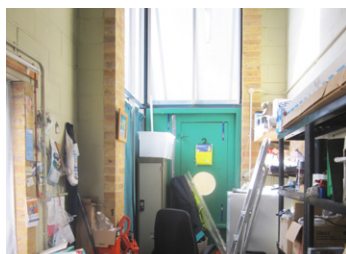
1



2



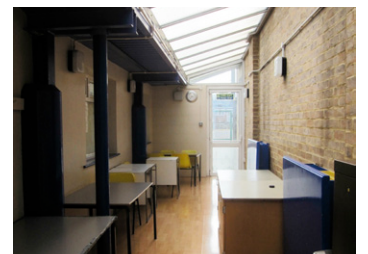
3



4



5



6



9



15

The spaces

Note:

All spaces can be painted and adjusted to suit the artist and cook residency programme. The buildings will be unfurnished when we take possession in September.