

The Adelaide Health Care Centre – Artwork Implementation

Deadline: 5th June 2009

Artist's Brief

Introduction:

NHS Southampton has commissioned a new primary care delivery centre in Millbrook, Southampton. Adelaide Health Care Centre will deliver health and related services benefiting the local community. This new building will house a wide variety of services and will be available to the public with extended hours, seven days a week. Services already planned for the centre include:

- A walk-in centre
- Physiotherapy
- APMS GP Services
- School of Podiatry
- Community Nurses



The Adelaide Health Care Centre design

This new building has created the opportunity for members of the community to gather and receive all the necessary services in one place where previously, service provision was scattered across the city. The building features a stunning atrium which is the central reception and meeting point of the building. A café will be contained within the atrium and will provide healthy snacks and lunch items as well as hot and cold drinks.

Description:

The Cornerstone Arts Foundation is seeking expressions of interest from artists to create bespoke artwork for the new health care centre in Southampton. This landmark building is due for completion in October, 2009 and requires artwork that will enhance its striking architecture and provide a soothing and comfortable environment for all who use it.

Artists will be working together as a design team with lead artist, Trudi Lloyd Williams to create a series of works within the building which will have a dialogue with one another. They will also be working with the Arts Advisory Committee which has representatives from NHS Southampton, Architecture plb, Osborne and South West Hampshire LIFT.



Design layout for the reception area

Projects:

Three pieces of art have been confirmed as the following:

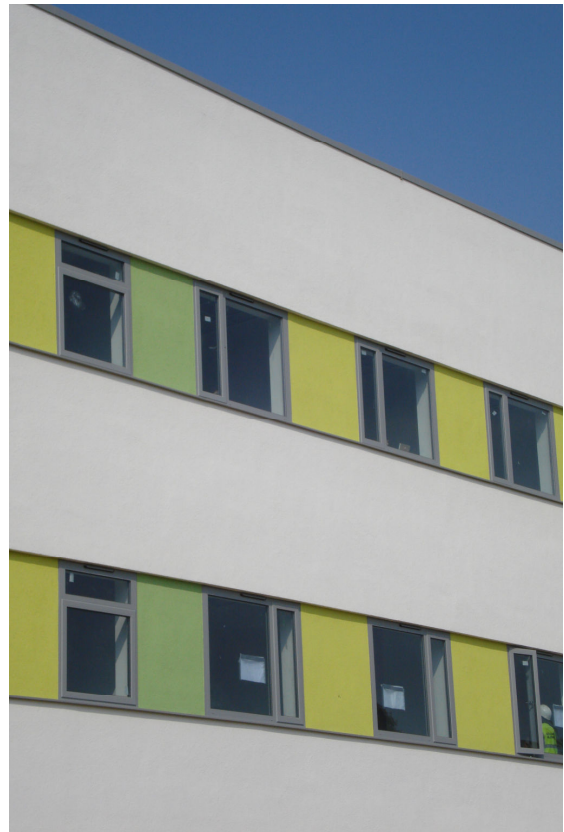
- A large suspended piece to be hung in the central atrium
- A graphic design or designs to be applied to windows and walls
- A sign or other landmark to signify the entrance to the building.

We welcome any other suggestions for artwork within the building.

Budget:

Up to £30,000 is available to include all costs within the project. This will be shared between several different artists working on different proposals.

Artists submitting proposals for this project will need to submit an outline budget to give a basic idea of the cost of their proposal to include artists' fees, estimated material costs, estimated installation costs and a proposed maintenance plan.



Exterior render of the centre

Timescale:

Artists are invited to make a submission to include:

- 5 examples of relevant and recent work
- A written project outline from 500-700 words
- An outline budget as detailed in the budget section
- Include relevant experience with community based projects
- Artist statement and CV
- Personal website details or web links to previous work
- Two relevant, professional references

Deadline for submission is 5th June 2009 at 5:30pm.

Short-listed artists will be contacted by 15th June.

Interviews will be held on 22nd June in Southampton, venue TBA.

All commissioning will be complete by 26th June. Work will begin in early July. Deadline for artwork to be completed and installed is 5th October 2009.

All digital files need to be sent in high-resolution pdf format.

We welcome submissions from Hampshire artists.



The atrium

How to apply:

Submissions can be emailed to Danielle.evans@swhantlift.co.uk or posted to:

Danielle Evans
South West Hampshire LIFT
2nd Floor, Oakhill House
2-6 Romsey Road
Shirley, Southampton
SO16 4BZ



Aerial view of Adelaide Health Care Centre

