

showcase project

Gardner House Swindon

- Landscaped garden by artists Dean & Jason Harvey of Factory Furniture for residents in sheltered accommodation



"The garden is very modern and I like that, although some people think there should be more flowers. The artists really listened to what we needed about seat heights and shaded areas"

Gardner House resident



SWINDONARTSCAPE
VISUAL PERFORMING & PUBLIC ART

This is number 4 in a series of profiled projects forming part of the Public Art Policy Review.

Project	Gardner House Swindon A landscaped garden for sheltered residential accommodation
Artists	Dean and Jason Harvey (<i>Factory Furniture</i>)
Commissioner	Swindon Borough Council
Aims	To create a beautiful garden for residents to use as 'another room' to their home. It includes a shelter for use during spring and autumn. Level paths and handrails were required to make the whole garden fully secure and accessible to elderly residents.
Benefits	A striking garden was created with a contemporary feel which is enjoyed by residents and used throughout much of the year.
Funders	A contribution by the Council through Swindon Borough Council's Percent for Art scheme . Arts Council England Regional Arts Lottery programme and the Community Shop.
Date	2000

Project Description

Dean and Jason Harvey of Factory Furniture worked closely with the residents and Swindon Borough Council's landscape architecture department to design a garden which incorporates a number of different elements. A red cedar and slate shelter creates a focus for the design and offers protection from weather and is lit in the evening. A dry slate garden planted with drought-loving plants is spanned by a bridge. Decking surrounds the shelter and main open area, creating easy safe access. A water feature bubbles through slate in a galvanised steel vessel and falling water runs from the roof of the shelter down a chain into a second vessel. Seating is placed at considered points within the garden allowing the views, sounds and scents of the garden to be enjoyed.



Photos: Paul Carter

showcase project

Celebrating Swindon

- Celebrating Swindon, an artists residency project with Simon Grennan & Christopher Sperandio for Asda Wal-Mart



"This art project has been a first for Asda Wal-Mart or any supermarket of its kind in retail. It demonstrated how a group of individuals can become a team to produce a project they can be proud of"

Commissioner, Asda Wal-Mart



SWINDONARTSCAPE
VISUAL PERFORMING & PUBLIC ART

This is number 6 in a series of profiled projects forming part of the Public Art Policy Review.

Project	Celebrating Swindon A temporary art project for Asda Wal-Mart Swindon
Artists	Simon Grennan and Christopher Sperandio
Commissioner	Asda Wal-Mart & Swindon Borough Council
Locations	Hoardings within the superstore, billboards along the arterial routes joining the community of north Swindon to the town centre and on one of the buses travelling the route
Aims	To create a dialogue with the new store, its staff and the local community. To also contribute towards defining the unique character of the area and its people. To strengthen community interaction in the surrounding area and increase a greater public ownership of the artwork. The project also aimed to support communication in an area that has undergone massive commercial and residential development.
Benefits	The project demonstrated how art can be used in a new and exciting way; by posters and merchandise in the store and on the bus and posterboards. The artworks became a talking point and residents were able to identify with them as they were 'portraits' of local people.
Funders	ASADA Wal-Mart through the Council's Percent For Art scheme
Date	2001 - 2003

Project Description

Celebrating Swindon was a two year project which involved an artists residency and a programme of public art activity. **Grennan and Sperandio** undertook a residency at the superstore during the first year the store was open. Their research with staff and the local community defined the unique character of the area and its people and led to a programme of public art activity launched on the store's first birthday. A billboard at the entrance of the store, a painted double decker bus and billboards along the bus routes from the town centre to the store, carry portraits and quotes of local residents created by the artists.



Photos: James Newell (cover), John Martin

showcase project

The Journey

- An atrium glasswork for The Great Western Hospital Swindon by Artist Amber Hiscott



"The artwork is the first thing people see when they arrive, the TV cameras always focus on it when they do a story on the hospital. I would venture to say that in time Amber's work will become synonymous with the Great Western."

Community member of the Hospital Art Group



This is number 5 in a series of profiled projects forming part of the Public Art Policy Review.

Project	Atrium entrance glasswork commission The Great Western Hospital Swindon
Artists	Amber Hiscott
Commissioner	The Swindon & Marlborough NHS Trust
Location	The Great Western Hospital is located to the South East of Swindon Town Centre, close to Junction 15 of the M4 Motorway.
Aims	The work was developed as part of Artalive , a long-term project established by the Hospital Trust to develop high quality, professional arts activity as an integral part of the new hospital environment .
Benefits	The piece creates an uplifting and inspiring entrance to the hospital.
Funders	The Swindon & Marlborough NHS Charitable Fund and the Regional Arts Lottery programme
Date	2002

Project Description

The atrium commission is a 60sq metre glass artwork located in the entrance of the new hospital and stretches from the first to the fifth floor. The vibrant design was created in response to the artist walking in, and making sketches of, the surrounding Wiltshire landscape.

Amber Hiscott was shortlisted for the Jerwood Applied Arts Prize in 2003 and sample panels from this artwork formed part of her exhibition.

Design by Amber Hiscott

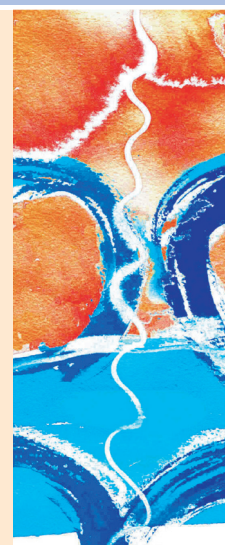


Photo: Tiffany Black



Further information contact Celia Yeoman, Swindon Artscape Manager
T 01793 466 517 E cyeoman@swindon.gov.uk www.swindonartscape.co.uk

showcase project

Foyer Design Scheme The Civic Offices

- Designed by artists Jonathan Baulkwill & Chris Turner for the Council's Civic Offices



"I didn't realise this was a public art commission but I can see that a lot of thought has gone into its design so that it suits the building perfectly. The quality and craftsmanship is excellent considering it's been here for years'

Council employee



This is number 1 in a series of profiled projects forming part of the Public Art Policy Review.

Project	Reception Foyer The Civic Centre, Swindon
Artists	Jonathan Baulkwill & Chris Turner
Commissioner	Thamesdown Borough Council
Location	The entrance foyer of Swindon Borough Council's Civic Offices, Euclid Street, Swindon
Aims	The reception desk forms part of an overall design scheme including a coffee table, seating and signage for the Council's Civic offices. The design was intended to compliment the 1930s architecture and interior. The design was to use materials from sustainable sources and allow full access for disabled visitors and staff
Benefits	A unique reception area was created that adds distinction to the building whilst providing a sensitive response to the architecture. The foyer offers a sense of permanency and confidence in the history and function of the Civic Offices.
Funders	Contribution through Swindon Borough Council's Percent for Art scheme
Date	1991

Project Description

The designs reference the classic rounded forms of 1930s interior design and architecture, combining contemporary design lines with echoes of authentic 1930s forms. The materials selected for the desk and seating were birch, maple and walnut.

Civic bench



Photos: Ruth Carslay

showcase project

The Brunel North Pole

- Lightwork by artist Tom Dixon for the centre of Swindon



"I love this sculpture and I'll drive past it on winter nights to cheer myself up"

Swindon resident



This is number 2 in a series of profiled projects forming part of the Public Art Policy Review.

Project	The Brunel North Pole Brunel Shopping Centre Swindon
Artists	Tom Dixon
Commissioner	Swindon Borough Council
Location	Entrance to House of Fraser Car Park, Farnsby Street.
Aims	The artwork was designed to guide drivers and pedestrians to the multi-story car park. To signal the entrance to the heart of Swindon's commercial and retail area and to act as a confident symbol for Swindon and a dramatic contemporary addition to the night skyline.
Benefits	The project was a creative collaboration between the artist and the Council's engineers. Tom worked with the engineers to develop this extraordinary contemporary structure, referred to as 'an object of our time'. The piece was featured in an exhibition at The Crafts Council in 1997.
Funders	Externally funded through Swindon Borough Council's Percent for Art scheme.
Date	1997

Project Description

The lightwork stands as a ten metre high galvanised steel column with 33 interlocking polyurethane 'jack' shaped pods. With a four-colour internal light source, the artwork can be viewed from a distance. It was designed as an attractive and unique sculptural form, to add character to the heart of Swindon's retail area.



Photos: Paul Carter

showcase project

Animal Seat Wanborough Village

- Seating and sculptures designed for The Beanlands by artist Walter Jack



"When I walk my dog the sculptures give me an interesting route to follow"

Local resident



SWINDONARTSCAPE
VISUAL PERFORMING & PUBLIC ART

This is number 3 in a series of profiled projects forming part of the Public Art Policy Review.

Project	Sculptural arch and seating Wanborough Village Park, Wiltshire
Artists	Walter Jack
Commissioner	Swindon Borough Council for Wanborough Parish Council
Commissioner	Swindon Borough Council for Wanborough Parish Council
Aims	The artworks are enjoyed by residents and visitors who use the open space. They are appropriate to, and enhance their surroundings and have endured well over time. The artworks were created through a two year partnership with the parishioners of Wanborough Village and the artist worked with the pupils of Wanborough Primary School .
Benefits	The artwork was the result of a two year partnership with the parishioners of Wanborough Village .
Funders	Beazer Homes Bristol Ltd as part of Swindon Borough Council's Percent For Art scheme.
Date	1997

Project Description

The **Animal Seat** is one of three functional sculptures which was created from locally-sourced green oak and Sarson stone. The seat is 4m tall and was positioned to offer panoramic views over the surrounding Wiltshire and Oxfordshire countryside. The sculptural arch is positioned adjacent to **Wanborough Primary School** and is a key feature of **The Beanlands**, which can be seen from a distance when approaching. It is made of a single green oak tree, divided into three sections. A tilted seat was created from a single Sarson stone boulder with a green oak seat, to compliment the other sculptures.



Animal Seat Photo: Barbara Dixon, Lorraine Cox (Cover Photograph)